

Salford Health Overview and Scrutiny Committee

Integrated Care System Update

Salford

Integrated Care Partnership



Part of Greater Manchester
Integrated Care Partnership



Presentation by:

Hannah Dobrowolska

Background

- Health and Care Act (2022)
 - Greater Manchester Devolution (2015)
 - Integrated Care System
 - Greater Manchester Integrated Care Partnership (the partnership)
 - NHS Greater Manchester Integrated Care (the statutory body)
 - GM operating model needs to represent truly integrated working (not provider vs commissioner, GM vs local)
 - Activity coordinated between localities and NHS GM through the appointment of a single Place Based Lead (Tom Stannard for Salford)
-

Ambition and approach

All organisations committed to:

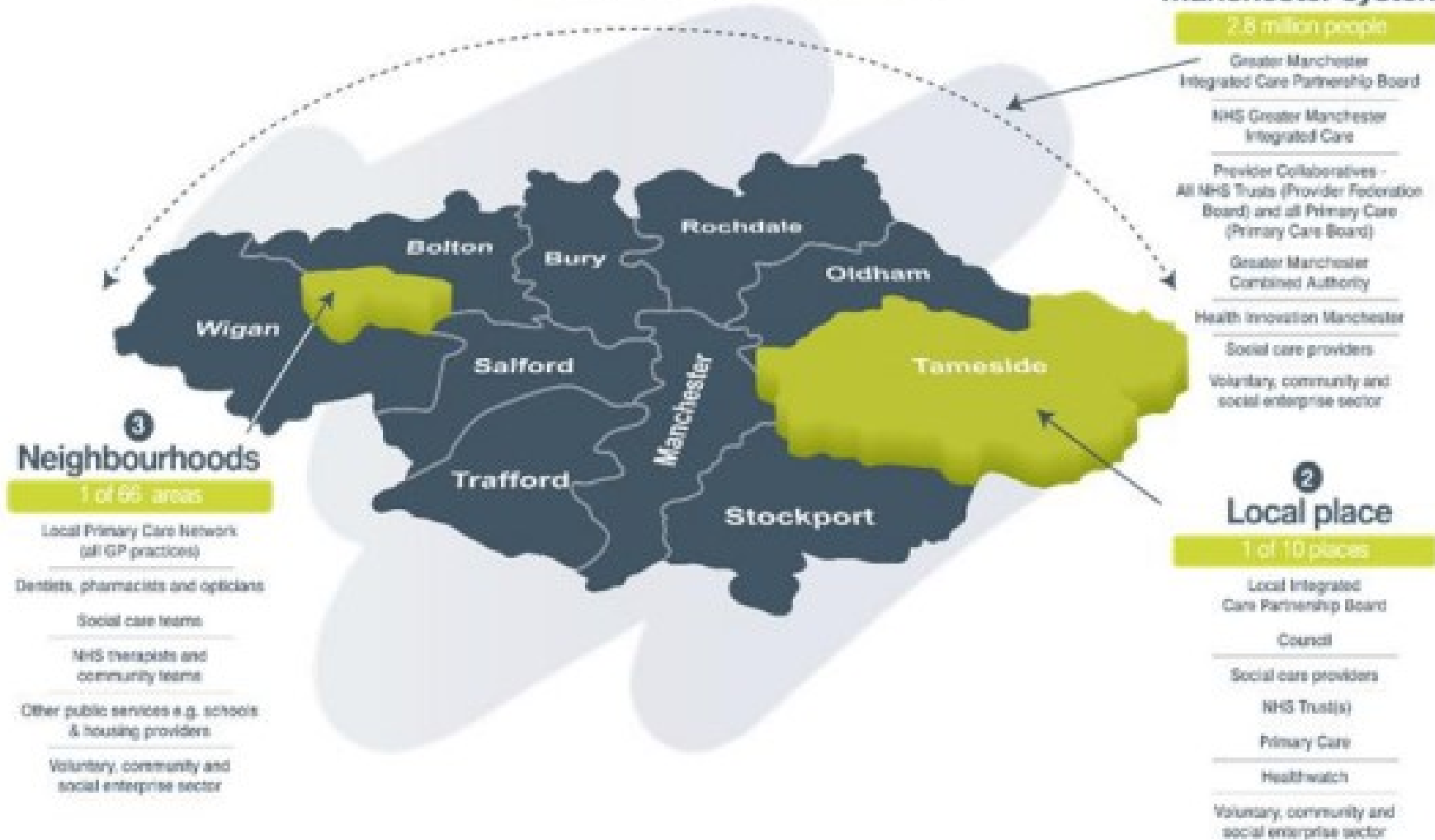
- 1) improving population health
- 2) delivering better standards
- 3) achieving financial sustainability
- 4) reducing inequalities

This will require

- 1) Joint planning and joint working at each level
 - 2) Informed allocation of resource (people and money) to enable each component part to deliver its contribution
 - 3) Bold, radical and collective leadership to improve population health and tackle health inequalities
-

Operating at 3 levels to

- Help the NHS to support broader social and economic development
- Improve population health and healthcare
- Tackle unequal outcomes and access
- Enhance productivity and value for money



1 Across Greater Manchester system

2.8 million people

- Greater Manchester Integrated Care Partnership Board
- NHS Greater Manchester Integrated Care
- Provider Collaboratives - All NHS Trusts (Provider Federation Board) and all Primary Care (Primary Care Board)
- Greater Manchester Combined Authority
- Health Innovation Manchester
- Social care providers
- Voluntary, community and social enterprise sector

2 Local place

1 of 10 places

- Local Integrated Care Partnership Board
- Council
- Social care providers
- NHS Trust(s)
- Primary Care
- Healthwatch
- Voluntary, community and social enterprise sector

3 Neighbourhoods

1 of 66 areas

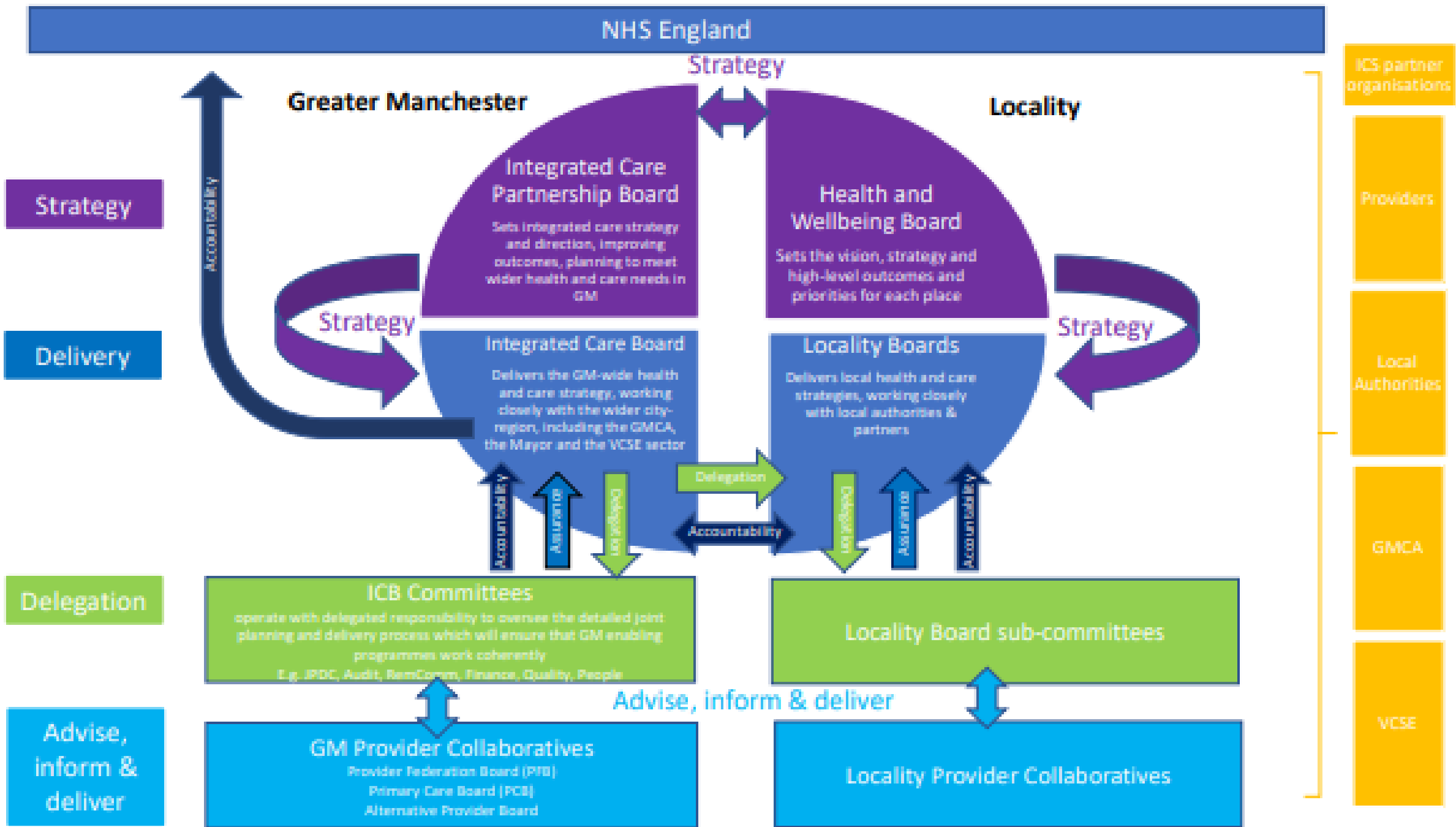
- Local Primary Care Network (all GP practices)
- Dentists, pharmacists and opticians
- Social care teams
- NHS therapists and community teams
- Other public services e.g. schools & housing providers
- Voluntary, community and social enterprise sector

Salford

Integrated Care Partnership



- All organisations and staff will need to operate at different spatial levels, recognising interdependencies
- Services will be “anchored” to the most appropriate a spatial level
- Financial flows should not decide spatial level for decision making

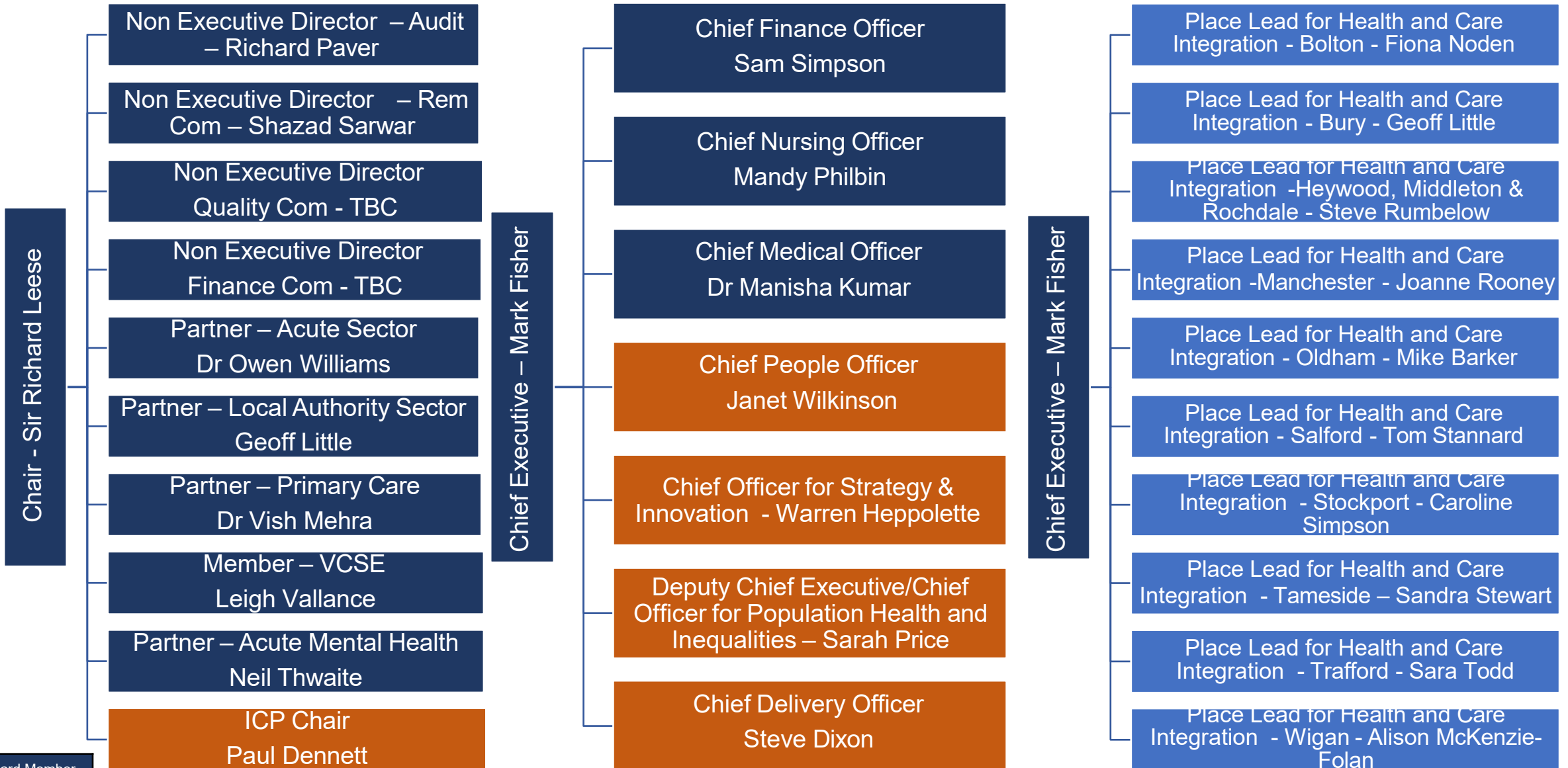


System governance

- Greater Manchester Integrated Care Partnership Board
- NHS Greater Manchester Integrated Care Board
- Joint Planning and Delivery Committee
- Provider Federation Board
- Salford Health and Wellbeing Board
- Salford Locality Board
- Salford Provider Collaborative Board
- Salford locality sub groups under review

NB: All to take a system view

NHS Greater Manchester Integrated Care



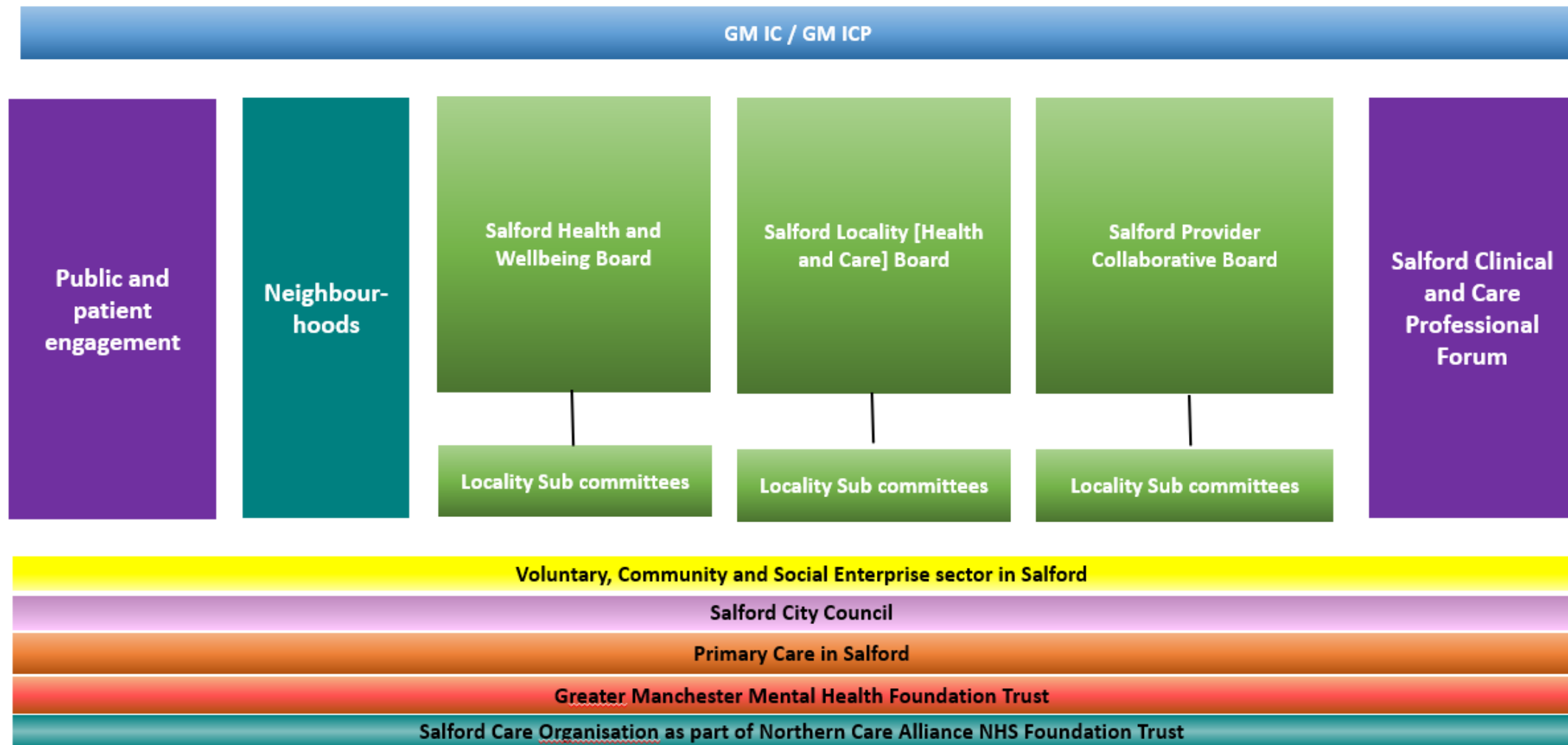
Chair - Sir Richard Leese

Chief Executive – Mark Fisher

Chief Executive – Mark Fisher

- Board Member
- Board Attendee
- Place Executive

Salford Locality Governance Structure



Next steps

- Clarity regarding delegations from GM to localities
 - Development of Salford level Boards
 - Salford Locality Board
 - Salford Provider Collaborative Board
 - Reporting arrangements, including in relation to strategy, quality, performance and finance
 - Agreement of key locality priorities
 - Locality Team senior management arrangements
 - Functions review and redesign across GM and localities
-



Any questions