

Health and Wellbeing Board

Integrated Care System Update

Salford

Integrated Care Partnership



Background

- Health and Care Act (2022)
 - Greater Manchester Devolution (2015)
 - Integrated Care System
 - Greater Manchester Integrated Care Partnership (the partnership)
 - NHS Greater Manchester Integrated Care (the statutory body)
 - GM operating model needs to represent truly integrated working (not provider vs commissioner, GM vs local)
 - Activity coordinated between localities and NHS GM through the appointment of a single Place Based Lead (Tom Stannard for Salford)
-

Ambition and approach

All organisations committed to:

- 1) improving population health
- 2) delivering better standards
- 3) achieving financial sustainability
- 4) reducing inequalities

This will require

- 1) Joint planning and joint working at each level
 - 2) Informed allocation of resource (people and money) to enable each component part to deliver its contribution
 - 3) Bold, radical and collective leadership to improve population health and tackle health inequalities
-

Operating at 3 levels to

- Help the NHS to support broader social and economic development
- Improve population health and healthcare
- Tackle unequal outcomes and access
- Enhance productivity and value for money



Salford

Integrated Care Partnership

- All organisations and staff will need to operate at different spatial levels, recognising interdependencies
- Services will be “anchored” to the most appropriate a spatial level
- Financial flows should not decide spatial level for decision making

NHS England

Greater Manchester

Locality

Integrated Care Partnership Board

Sets integrated care strategy and direction, improving outcomes, planning to meet wider health and care needs in GM

Health and Wellbeing Board

Sets the vision, strategy and high-level outcomes and priorities for each place

Strategy

Strategy

Integrated Care Board

Delivers the GM-wide health and care strategy, working closely with the wider city-region, including the GMCA, the Mayor and the VCSE sector

Locality Boards

Delivers local health and care strategies, working closely with local authorities & partners

Accountability

Strategy

Delivery

ICS partner organisations

Providers

Local Authorities

GMCA

VCSE

Delegation

ICB Committees

operate with delegated responsibility to oversee the detailed joint planning and delivery process which will ensure that GM enabling programmes work coherently
E.g. IPDC, Audit, RemComms, Finance, Quality, People

Locality Board sub-committees

Advise, inform & deliver

Advise, inform & deliver

GM Provider Collaboratives

Provider Federation Board (PFB)
Primary Care Board (PCB)
Alternative Provider Board

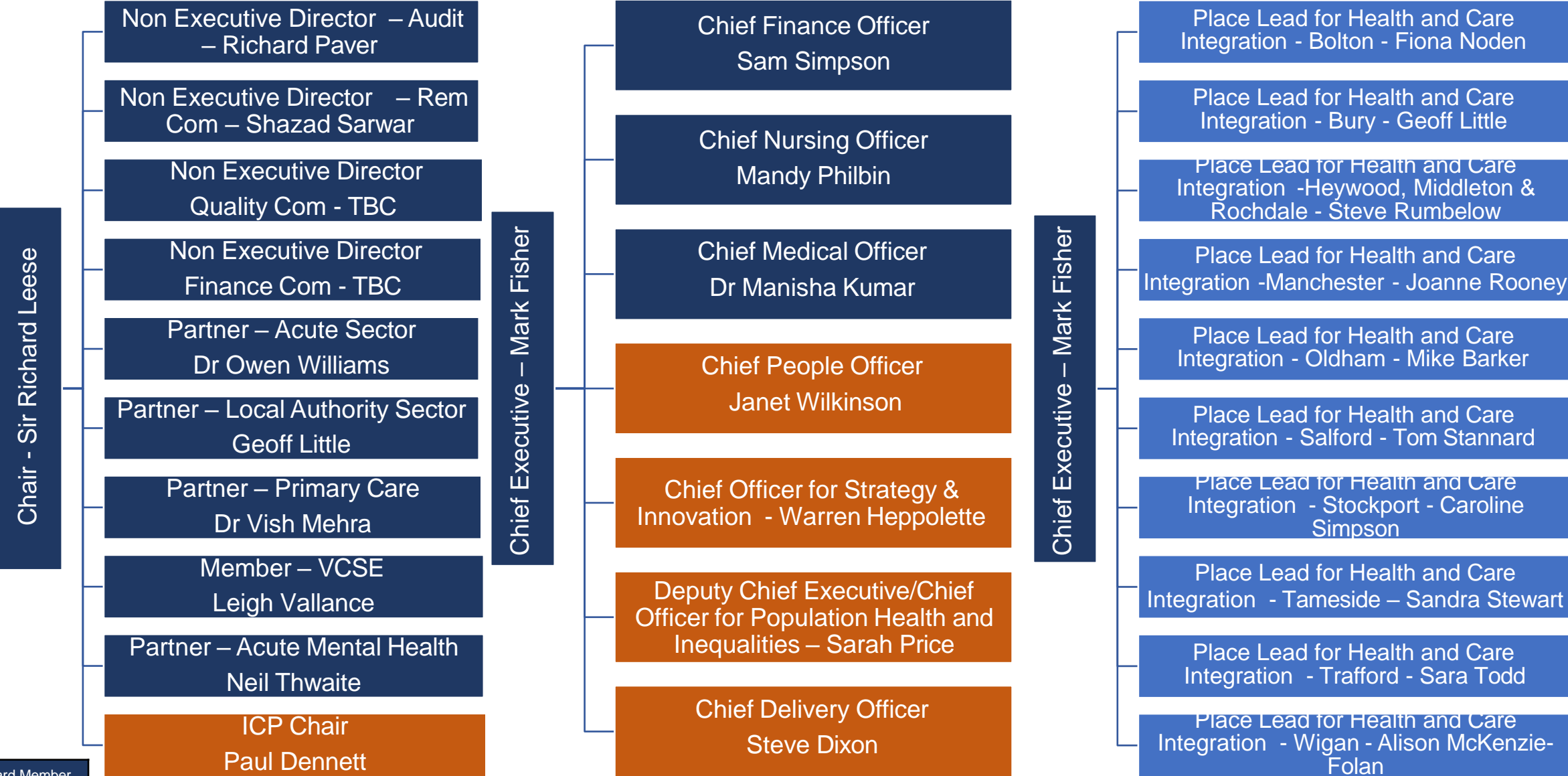
Locality Provider Collaboratives

System governance

- Greater Manchester Integrated Care Partnership Board
- NHS Greater Manchester Integrated Care Board
- Joint Planning and Delivery Committee
- Provider Federation Board
- Salford Health and Wellbeing Board
- Salford Locality Board
- Salford Provider Collaborative Board
- Salford locality sub groups under review

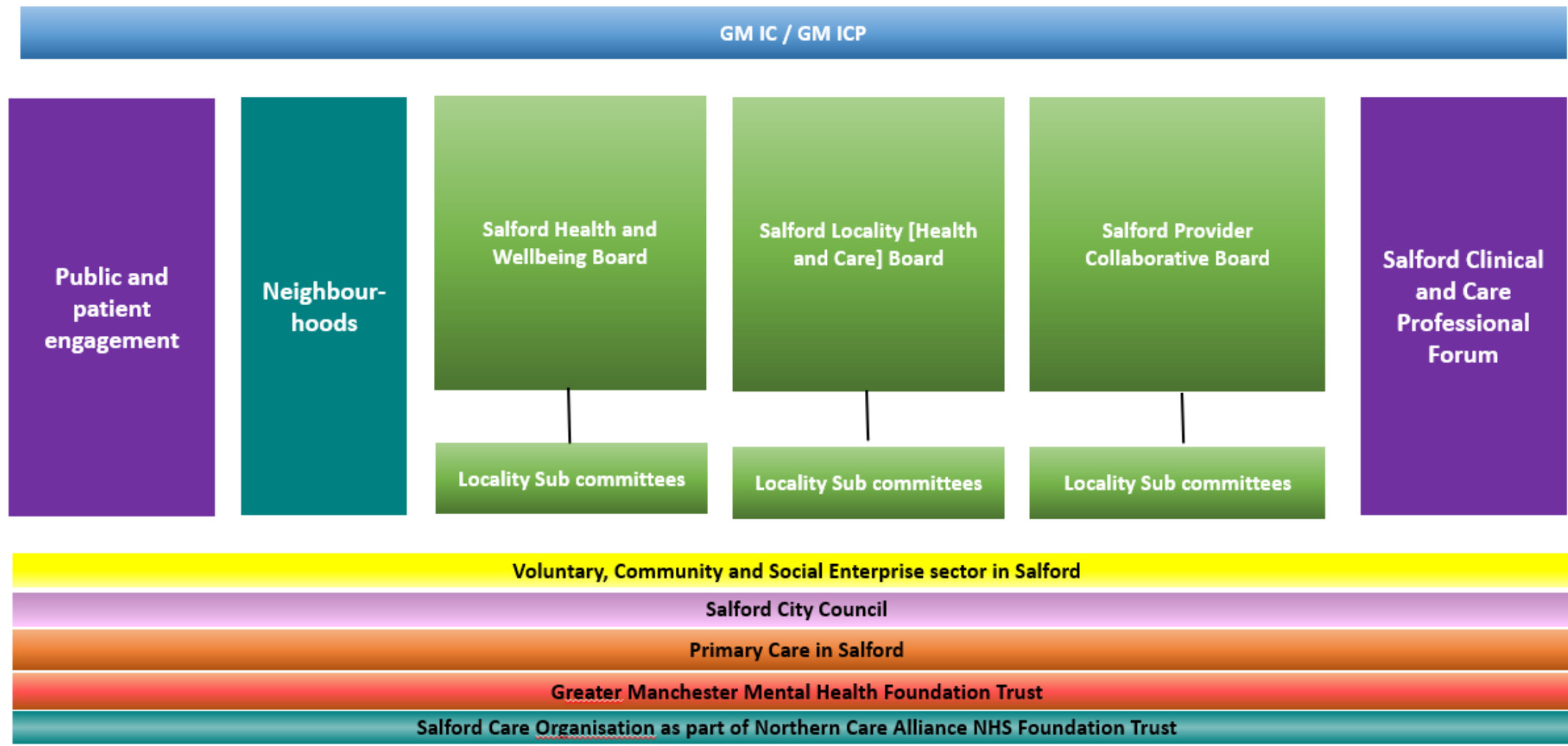
NB: All to take a system view

NHS Greater Manchester Integrated Care



Board Member
 Board Attendee
 Place Executive

Salford Locality Governance Structure





Next steps

- Clarity regarding delegations from GM to localities
 - Development of Salford level Boards
 - Salford Locality Board
 - Salford Provider Collaborative Board
 - Reporting arrangements, including in relation to strategy, quality, performance and finance
 - Agreement of key locality priorities
 - Locality Team senior management arrangements
 - Functions review and redesign across GM and localities
-



Any questions